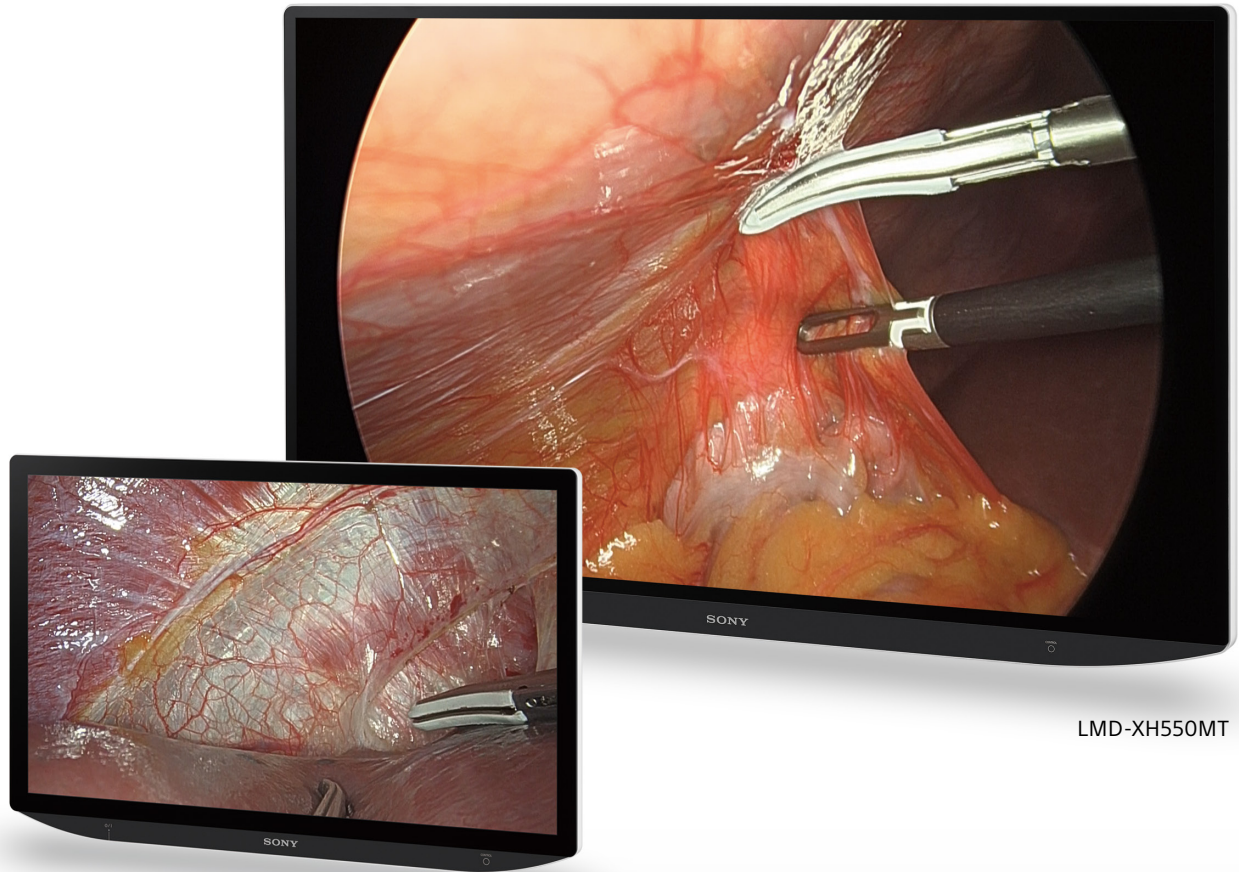


SONY



LMD-XH550MT

LMD-XH320MT

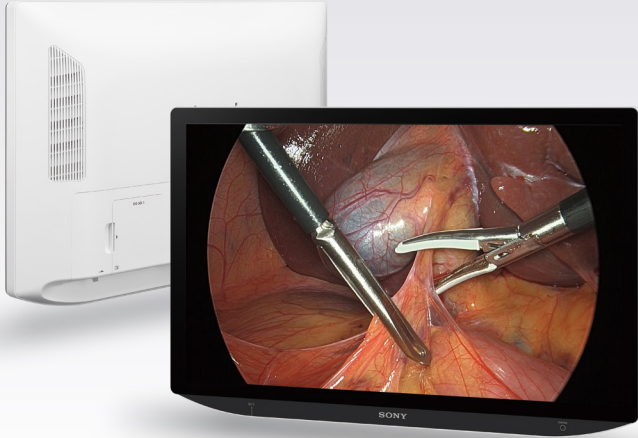
LMD-XH550MT LMD-XH320MT

4K 3D/2D 55-inch and 32-inch LCD monitor



3D

High Quality 4K UHD 3D/2D 55-inch and 32-inch Medical Monitor



The LMD-XH550MT and LMD-XH320MT medical grade monitors with high brightness, high contrast and wide color gamut can display very high quality 4K UHD color video images in 3D and 2D. High-resolution 4K and 3D imaging provides depth perception and spatial orientation suitable for use in hospital operating theaters, surgical centers and classrooms for education.

Superb Picture Quality

4K Ultra HD Resolutions

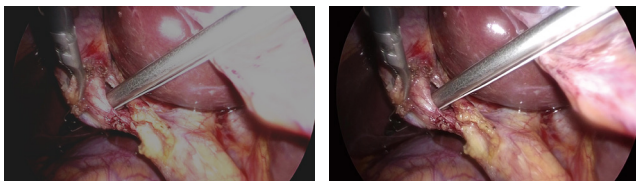
4K resolution (3840 x 2160 pixels) on a large 55-inch or 32-inch screen offers high picture quality.

High Brightness and High Contrast

The LMD-XH550MT and LMD-XH320MT feature Sony's unique Local Dimming Technology, which controls the brightness of the LEDs depending on the scene. Thanks to this, the monitors can achieve a peak brightness of more than 1,500 cd/m² (panel specification) and a contrast ratio of 1,000,000:1.

HDR-compatible

The LMD-XH550MT and LMD-XH320MT have the HDR display function. When receiving the HLG (Hybrid Log-Gamma) signals, the monitors can reproduce the images more realistically. Greater detail capture in the highlights and dark areas - no detail remains undiscovered in the dark or lost in overexposed highlights.

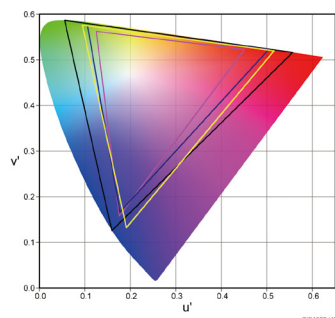


SDR

HDR

Wider Color Gamut

The LCD panel and signal processing technology offer a wide color gamut. This conforms to the ITU-R recommendation BT.2020 with a wider color space than the BT.709 color space, allowing for better color reproduction and realistic visualization.



Anti-Reflection Structure

The LMD-XH550MT and LMD-XH320MT are designed to minimize reflected glare in brightly lit ORs. The panel structure achieves clear, high-contrast images by controlling reflection and minimizing light dispersion in the LCD panel.

3D Features

Various Display Formats in 3D

The LMD-XH550MT and LMD-XH320MT can display 3D and 2D signals in HD and 4K. These monitors offer SDI (12G/3G), Display Port, DVI, and HDMI terminals supporting a variety of different 2D and 3D signal formats such as side-by-side, line-by-line, and top & bottom. Furthermore, dual stream is available when accepting an HD 3D signal via SDI. 4K dual stream via two 12G-SDI is also available (XH550MT only). The 3D/2D operating mode can be changed directly with the button on the front panel and the mode is indicated on the display.



Side-by-side



Line-by-line



Top & bottom



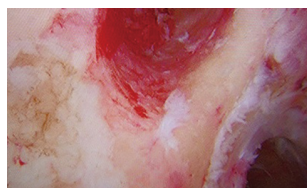
Dual stream*

*SDI Only

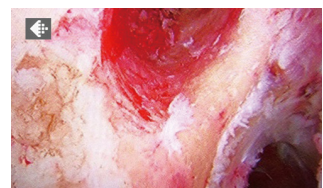
Advanced Features

Advanced Image Multiple Enhancer (A.I.M.E.™)

Sony's unique A.I.M.E. technology enhances the displayed images by adjusting the color, contrast and visibility of shadow areas for more comfortable viewing.



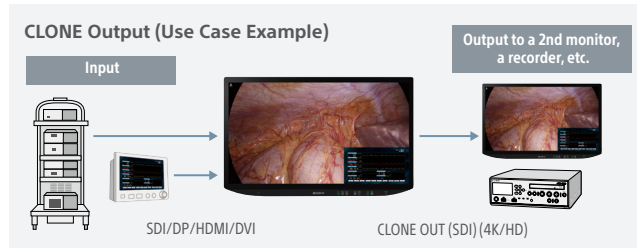
A.I.M.E. OFF



A.I.M.E. ON

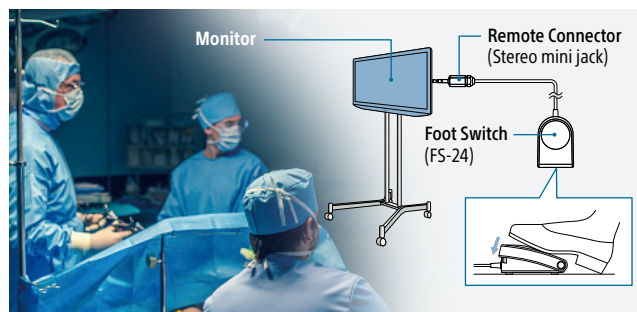
CLONE Output

The clone-output connector enables you to output the same image as the displayed image, such as A.I.M.E., picture-in-picture images, and more. This allows you to easily record the same content as you are viewing. Also, the resolution of the clone-output can be selected from 4K or HD depending on how you are using it.



Simple Remote Control via Stereo Mini

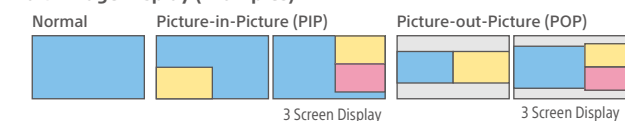
This allows you to use the foot switch via the stereo mini jack to switch the most frequently used menus such as A.I.M.E. ON/ OFF, Port A/B, PIP/POP, flip pattern, and 2D/3D.



Wide Range of Display Modes

The monitor can display multiple images at the same time or rotate an image 180 degrees. Options include two screens with main 3D/2D and sub 2D picture, or three screens with three 2D pictures.

Multi-image Display (Examples)

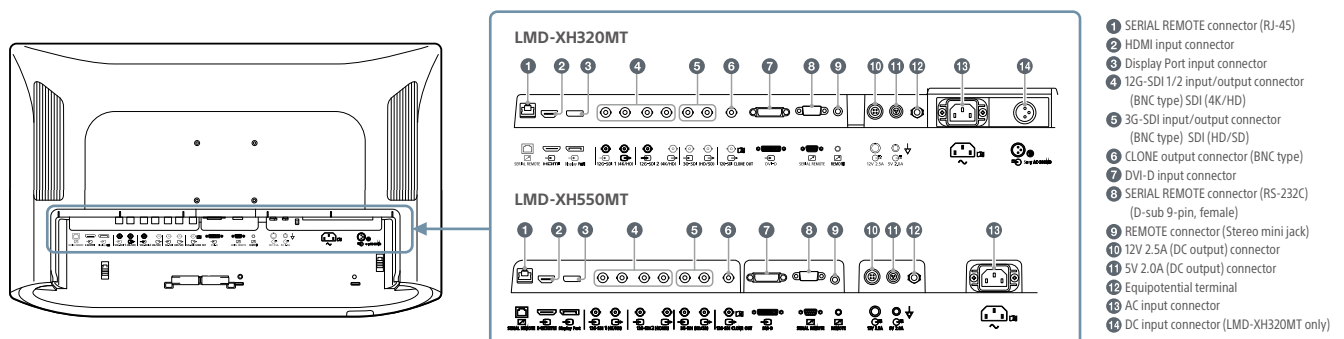


Flip Pattern



Wide Range of Connectors

Various input/output connectors such as a 12G-SDI and Display Port are available to meet a wide variety of user needs.



Easy to Install & Use

Design for Better Cleaning

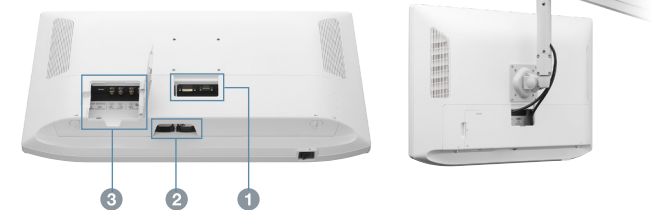
The LMD-XH550MT and LMD-XH320MT offer a smooth surface and streamlined back shape. This design allows you to easily wipe liquids and gels off the LCD panel, control buttons, and the rear cover, ensuring a high standard of disinfection and cleanliness.



Installation-Friendly Cabling

All the connectors face downwards, allowing for easy and organized cable connection. There are three cable access points with covers to enable for variable installation settings. These features mean that you can simplify the cabling for all your various installation needs.

Cable access point 1-3



Other Features

- HD/SD to 4K Upscaling
- 3D/2D Color Matching Function
- Zoom Function (1x, 1.2x, 1.5x or 2x)
- Light weight of 27 kg (XH550MT) and 10.5 kg (XH320MT) for Installation Flexibility
- Choice of Direct AC In or AC Adaptor (XH320MT only)
- Control Panel with LED Lighting Navigation

Specifications

	LMD-XH550MT	LMD-XH320MT
Picture Performance		
Panel	TFT Active Matrix LCD	
Picture Size (Diagonal)	1387.8 mm (54 3/4 inches)	800.757 mm (31 5/8 inches)
Effective Picture Size (H x V)	1209.6 x 680.4mm (47 5/8 x 26 7/8 inches)	697.92 x 392.58 mm (27 1/2 x 15 1/2 inches)
Pixel pitch	0.315 x 0.315 mm (0.0124 x 0.0124 inches)	0.18175 x 0.18175 mm (0.00716 x 0.00716 inches)
Resolution (H x V)	3,840 x 2,160 pixels	
Aspect	16:9	
Pixel Efficiency	99.99%	
Backlight	LED	
Panel Technology	LCD with IPS	
Luminance (Panel Specification)	550cd/m ² (Typical) 1500cd/m ² (Typical, Peak)	650cd/m ² (Typical) 1750cd/m ² (Typical, Peak)
Contrast Ratio	1,000,000:1 (Typical)	
Colors	10 bit colors (1,073,741,824)	
Panel Frame Rate	50/60 Hz	
Viewing Angle (Panel Specification)	89°/89°/89°/89° (Typical) (up/down/left/right, contrast > 10:1)	
Vertical Viewing Angle (3D Mode)	37°at a viewing distance more than 1,000mm, crosstalk ratio less than 7% (Typical)	32°at a viewing distance more than 690mm, crosstalk ratio less than 7% (Typical)
Gamma	1.8, 2.0, 2.2, 2.4, 2.6, DICOM, Highlight, HLG	
Input		
HDMI Input	HDMI (x1) (HDCP 2.3 correspondence)	
DVI-D Input	DVI-D (x1) (TMDS single link, HDCP 1.4 correspondence)	
SDI Input	BNC (x2) 12G/3G/HD-SDI	
	BNC (x1) 3G/HD/SD-SDI	
Display Port	Display Port (x1) (SST HDCP 1.3 correspondence)	
Serial Remote (LAN)	D-sub 9-pin (RS-232C) (x1), RJ-45 (x1) [Ethernet, 10BASE-T/100BASE-TX]	
Remote	Stereo mini jack (x1)	
AC input	AC input connector (x1) AC 100-240 V, 50/60 Hz	
DC Input	–	DC input connector (x1) DC 26 V
Output		
SDI Output	BNC (x2) 12G/3G/HD-SDI	
	BNC (x1) 3G/HD/SD-SDI	
CLONE output	BNC (x1) 12G/3G-SDI	
DC 5 V / 12 V Output	5 V Output (x1) 2.0 A max	
	12 V Output (x1) 2.5 A max	
General		
Power Requirements	AC IN: 100 V - 240 V, 50/60 Hz, 3.1 A - 1.1 A	AC IN: 100 V - 240 V, 50/60 Hz, 2.4 A - 1.1 A
	–	DC IN: 26 V, 8.8 A (max) (Supplied from AC adaptor)
Power Consumption	Approx. 290 W (max.)	Approx. 230 W (max.)
Operating Temperature	0°C to 40°C (32°F to 104°F)	
Operating Humidity	30% to 85% (no condensation)	
Storage/Transport Temperature	-20°C to +60°C (-4°F to +140°F)	
Storage/Transport Humidity	20% to 90%	
Operating/Storage/Transport Pressure	700 hPa to 1060 hPa	
Dimensions (W x H x D)	1249.6 x 763.3 x 92.8 mm (49 1/4 x 30 1/8 x 3 3/4 inches)	753.9 x 476.3 x 84.7 mm (29 3/4 x 18 7/8 x 3 3/8 inches)
	Mass	Approx. 27 kg (Approx. 59 lb 8.4 oz)
Mounting (W x H)	200 x 200 mm 400 x 200 mm	100 x 100 mm
	IP Code	IP45 (front)/IP32 (others)
Supplied Accessories		
	AC power cord (1)	
	Plug holder for the supplied AC power cord (2)	
	Before Using This Unit (1)	
	CD-ROM (including the Instructions for Use) (1)	
	Service Contact List (1)	
	M6 x 12 mm Screw (4)	M4 x 12 mm Screw (4)
	3D Eye Shield Kit: CFV-E30SK (1)	
	Instructions for Use of the 3D Eye Shield Kit (1)	
Optional Accessories		
	3D Eye Shield Kit: CFV-E30SK	
	2D Eye Shield Kit: CFV-E20SK	
	3D Eye Shield: CFV-E30D	
	2D Eye Shield: CFV-E20D	
	Shield Cover: CFV-50SC	
	Shield Frame: CFV-B100	
	Foot Switch FS-24	
	–	AC Adaptor AC-300MD
	–	Monitor Stand SU-600MD

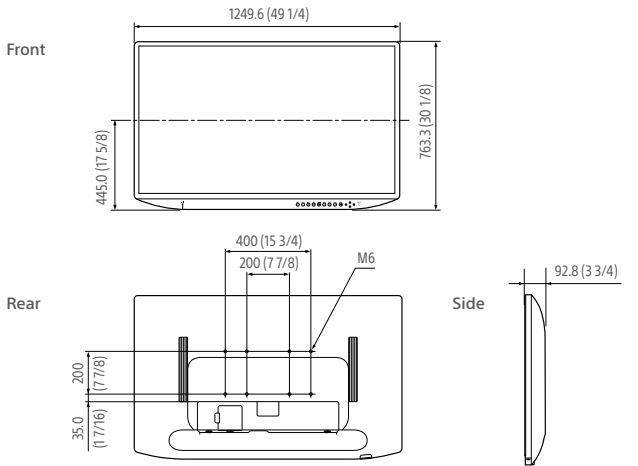
These products are distributed to US and EU as medical devices.
They satisfy product safety standards (e.g. IEC 60601-1).
For more details, please contact your nearest Sony sales office or an authorized dealer.

Distributed by

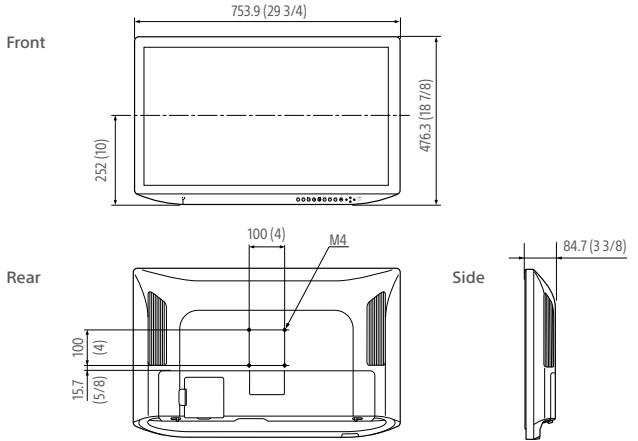
MK20477V10HB22MAR

Dimensions

LMD-XH550MT



LMD-XH320MT



Unit: mm (inches)

Optional Accessories



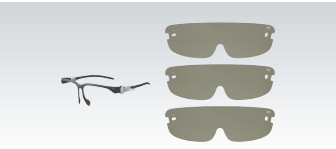
AC-300MD
AC Adaptor

* only for LMD-XH320MT



SU-600MD
Monitor Stand

* only for LMD-XH320MT



CFV-E30SK
3D Eye Shield Kit
CFV-E20SK
2D Eye Shield Kit
CFV-E30D
3D Eye Shield



CFV-E20D
2D Eye Shield
CFV-50SC
Shield Cover
CFV-B100
Shield Frame



FS-24
Foot Switch

©2022 Sony Corporation. All rights reserved.
Reproduction in whole or in part without written permission is prohibited.
Features, design, and specifications are subject to change without notice.
The values for mass and dimension are approximate.
Some images in this document are simulated.
“SONY” is a registered trademark of Sony Corporation.
“NUCLEUS”, “A.I.M.E.” and “BRAVIA” are trademarks of Sony Corporation.
All other trademarks are the property of their respective owners.
Please visit Sony’s professional website or contact your Sony representative for specific models available in your region.